

LDG YT-100
Automatic Tuner for
Yaesu FT-857/897 and
FT-100 Transceivers



LDG Electronics

1445 Parran Road
St. Leonard MD 20685-2903 USA

Phone: 410-586-2177

Fax: 410-586-8475

ldg@ldgelectronics.com

www.ldgelectronics.com

Table Of Contents

Introduction	3
Jumpstart, or “Real hams don’t read manuals!”	3
Specifications	4
An Important Word About Power Levels	4
Important Safety Warning	4
Getting to know your YT-100	5
<i>Front Panel</i>	<i>5</i>
<i>Rear Panel</i>	<i>6</i>
Installation	7
<i>Compatible Transceivers</i>	<i>7</i>
<i>FT-100, FT-100D Installation:</i>	<i>8</i>
<i>FT-857(D) and FT-897(D) Installation</i>	<i>9</i>
<i>Finishing Up Installation</i>	<i>9</i>
Operation	10
<i>Power-up</i>	<i>10</i>
<i>Basic Tuning Operation</i>	<i>10</i>
<i>Some Notes About Tuning</i>	<i>11</i>
<i>Toggle Bypass Mode:</i>	<i>12</i>
<i>Initiate a Memory Tune Cycle:</i>	<i>13</i>
<i>Force a Full Tune Cycle:</i>	<i>14</i>
<i>Status LED</i>	<i>15</i>
Application Information	15
<i>Mobile Operation</i>	<i>15</i>
<i>Remote Operation</i>	<i>16</i>
<i>MARS/CAP Coverage</i>	<i>16</i>
<i>Operation with a PC / CAT</i>	<i>16</i>
Theory of Operation	18
The LDG YT-100	20
A Word About Tuning Etiquette	21
Care and Maintenance	21
Technical Support	21
Two-Year Transferrable Warranty	21
Out Of Warranty Service	22
Returning Your Product For Service	22
Product Feedback	22

INTRODUCTION

LDG pioneered the automatic, wide-range switched-L tuner in 1995. From its laboratories in St. Leonard, Maryland, LDG continues to define the state of the art in this field with innovative automatic tuners and related products for every amateur need.

Congratulations on selecting the YT-100 100-watt automatic tuner for the Yaesu FT-100, FT-857 and FT-897 transceivers. The YT-100 provides semi-automatic antenna tuning across the entire HF spectrum plus 6 meters, at power levels up to 125 watts. It will tune dipoles, verticals, Yagis, or virtually any coax-fed antenna. It will match an amazing range of antennas and impedances, far greater than some other tuners you may have considered, including the built-in tuners on many radios.

The YT-100 is similar to previous LDG tuners, but is specially engineered to integrate with your Yaesu FT-100/857/897 HF radio. The YT-100 connects to the CAT (Computer Automated Transceiver) port on the back of the radio. The CAT interface allows an external device such as a PC or the YT-100 to control the FT-100/857/897 by sending it serial commands. The YT-100 takes advantage of this interface to simplify the tuning process -- one button push is all that is needed in order to switch the radio to AM mode, reduce power, transmit a carrier, measure the transmit frequency, and then restore the radio to its previous mode and power level!

The YT-100 is powered by the transceiver's CAT interface itself, so there is no additional power cable required to use the YT-100. Latching relays are used, so the YT-100 consumes no power when not tuning.

JUMPSTART, OR "REAL HAMS DON'T READ MANUALS!"

Ok, but at least read this one section before operating the YT-100:

Turn off power to your FT-100/857/897 radio.

Connect the HF/50 MHz antenna jack on the transceiver to the "TX" jack on the YT-100, using a 50 ohm coax cable jumper.

Connect the 50 ohm coax antenna feedline to the "ANT" jack on the YT-100.

Connect one end of the supplied radio interface cable to the "CAT/Linear" port on the back of your FT-100/857/897 radio.

Connect the other end of the supplied radio interface cable to the "Radio" jack on the back of the YT-100.

FT-100: Turn on power to your transceiver. Once it powers up, hold in the F key for one second to access the extended menus. Rotate the SEL knob until menu #61, "TUNER/ATAS" appears. Rotate the dial knob until "off" is selected. Hold in the F key again for one second, to return to normal operation.

FT-857/897: Turn on power to your transceiver. Once it powers up, hold in the FUNC key for one second to access the extended menus. Rotate the SEL knob until menu #019, "CAT RATE" appears. Rotate the dial knob until "4800" appears. Rotate the SEL knob again until menu #020, "CAT/LIN/TUN" appears. Rotate the dial knob until "CAT" appears. Hold the FUNC key for one second again to return to normal operation.

Select the desired operating frequency and mode.

Push and hold the **TUNE** button on the front of the YT-100 for one second (until the **Tuning LED**

comes on), then release. The transceiver automatically switches to AM mode, reduces power, and keys up, and the YT-100 begins a tuning cycle. At the end of the tuning cycle, the original mode and power level is restored.

Wait for the tuning cycle to end; you're now ready to operate!

SPECIFICATIONS

- 0.1 to 125 watts SSB and CW peak power, 30 watts on PSK and digital modes, and 100 watts on 6 meters.
- Latching relays for ultra low power operation.
- 2,000 memories for instantaneous frequency and band changing.
- Powered from the radio -- no extra power supply to hook up.
- Designed specifically for the Yaesu FT-100/FT-100D/FT-857/FT-857D/FT-897/FT-897D HF transceivers.
- Pass-thru CAT port allows YT-100 to control the radio over the CAT bus while still allowing a host PC to also control the radio. 4800 Baud.
- Pass-thru CAT port waits for idle CAT activity before controlling the transceiver.
- 1.8 to 54.0 MHz coverage. Frequency for memory storage is read from the radio via CAT.
- Tunes 4 to 800 ohm loads (16 to 150 on 6M), 16 to 3200 ohms with optional 4:1 Balun.
- For Dipoles, Verticals, Vees, Beams or any Coax Fed Antenna.
- CAT Din 8 cable included.
- Optional external Balun allows tuning of random length, long wire or ladder line fed antennas. See web site for details.
- Dimensions: 7.25"L x 6.75"W x 1.75"H.
- Weight: 1 pound.

AN IMPORTANT WORD ABOUT POWER LEVELS

The YT-100 is rated at 125 watts maximum power input *at most*. Many ham transmitters and transceivers, and virtually all amplifiers, output well over 125 watts. Power levels that significantly exceed specifications will definitely damage or destroy your YT-100. If your tuner fails during overload, it could also damage your transmitter or transceiver. Be sure to observe the specified power limitations.

IMPORTANT SAFETY WARNING

Never install antennas or transmission lines over or near power lines. You can be seriously injured or killed if any part of the antenna, support or transmission line touches a power line. Always follow this antenna safety rule: the distance to the nearest power line should be at least twice the length of the longest antenna, transmission line or support dimension.

GETTING TO KNOW YOUR YT-100

Your YT-100 is a quality, precision instrument that will give you many years of outstanding service; take a few minutes to get to know it.

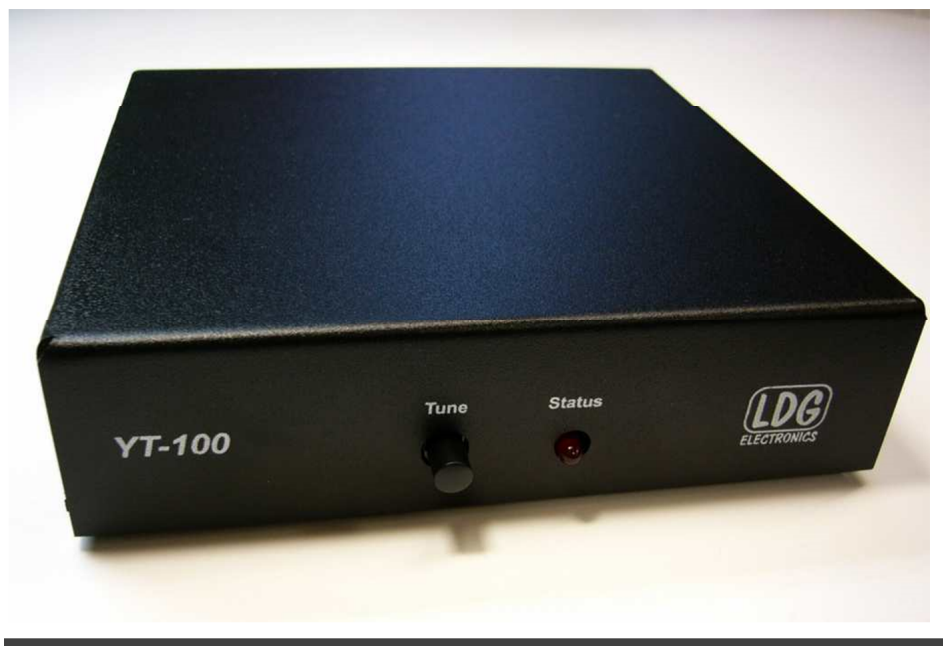
The YT-100 is designed specifically for use with the FT-100/857/897. Tuning is performed when the **Tune** button is pushed on the front of the YT-100. The tuner can be placed in bypass mode by pressing the **Tune** button momentarily.

The YT-100 is powered directly from the CAT port on the radio; no separate power supply is needed. The YT-100 automatically powers up at the start of a tuning cycle, and goes into an ultra low-power sleep mode when tuning is complete. The latching relays hold the tuned configuration indefinitely, even when DC power is completely removed. Tuning memories are stored in FLASH memory.

The YT-100 has 2,000 frequency memories. When tuning on or near a previously tuned frequency, the YT-100 uses “Memory Tune” to recall the previous tuning parameters in a fraction of a second. If no memorized settings are available, the tuner runs a full tuning cycle, storing the parameters for memory recall on subsequent tuning cycles on that frequency. In this manner, the YT-100 “learns” as it is used, adapting to the bands and frequencies as it goes.

Front Panel

On the front panel there is one pushbutton and one LED indicator light.



Tune Button: Initiates either a memory tune or a full tune, and also toggles the tuner between “active” and “bypass” modes.

Status LED: Lights to give feedback on button presses, lights during tuning; gives tune status at the end of a tuning cycle.

Rear Panel

The rear panel of the YT-100 features six connectors.



ANT connector: Connect the 50-ohm coax antenna feedline to this standard SO-239 connector.

GND connector (wing nut): Connect to antenna system ground.

TX connector: Connect a 50-ohm coax jumper cable from this standard SO-239 connector to the ANT jack on the back of the transceiver.

COMPUTER connector: This 8-pin mini-DIN connector connects to a personal computer via Yaesu's CT-62 cable or similar computer-to-CAT interface cable. Use of this port is optional; it is provided for those hams who would like to control their FT-100/857/897 via computer. This is a pass-thru port to the **RADIO** port, and is switched under software control by the YT-100's microprocessor. The firmware of the YT-100 has been written such that this will seem transparent to the user -- if using CAT to control your FT-100/857/897, just plug the PC's CAT cable into this port instead of the CAT jack on the back of the transceiver.

RADIO connector: This 8-pin mini-DIN connector is for connection to the transceiver's CAT jack. The YT-100 controls the PTT, power level, and operating mode via CAT commands sent to the transceiver. The YT-100 also reads the operating frequency directly from the transceiver so that it knows where to store tuning memory data.

REMOTE connector (1/8" jack): Allows remote operation by connecting a pushbutton switch to this input. Grounding the ring activates the tuner.

INSTALLATION

The YT-100 tuner is designed for indoor operation only; it is not water resistant. If you use it outdoors (Field Day, for example), you must protect it from the rain. The YT-100 is designed for use with coax-fed antennas. If use with longwires or ladder-line-fed antennas is desired, an external balun may be required. The LDG RBA-4:1 or RBA-1:1 is ideal, depending on the antenna and transmission line used.

Always turn your radio off before plugging or unplugging anything. The radio may be damaged if cables are connected or disconnected while the power is on.

Compatible Transceivers

The YT-100 is designed to be used **ONLY** with the following Yaesu 100 watt transceivers:

FT-100

FT-100D

FT-857

FT-857D

FT-897

FT-897D

WARNING: Do not attempt to use the YT-100 with any other transceivers, even if the CAT plug fits. At best, the YT-100 simply won't work with these radios. At worst, it could cause damage to the YT-100, the radio, or both.

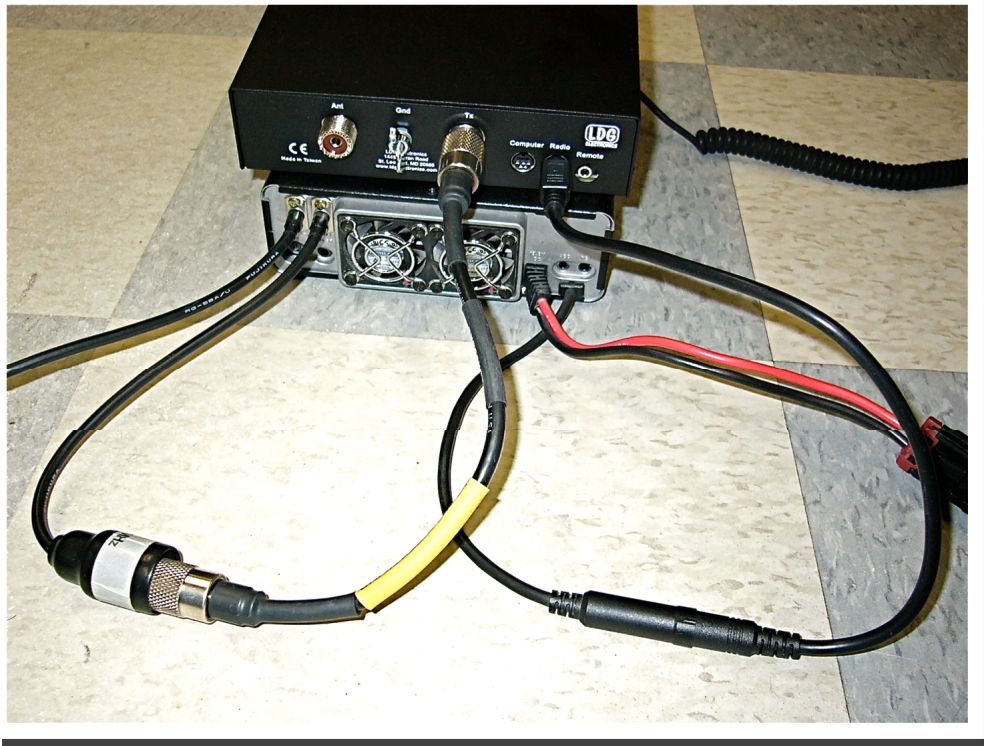
It is possible that more Yaesu transceivers will be added to this list as Yaesu releases new models. Be sure to check the LDG website for additional information.

FT-100, FT-100D Installation:

Connect the HF/50 MHz antenna jack on the FT-100 to the **TX** jack on the back of the YT-100, using a 50 ohm coax cable rated 125 watts or greater.

Connect the supplied radio interface cable to the mini-DIN 8-pin jack on the rear of the YT-100, marked "**Radio**". Connect the other end of this cable to the CAT pigtail lead on the rear of the FT-100.

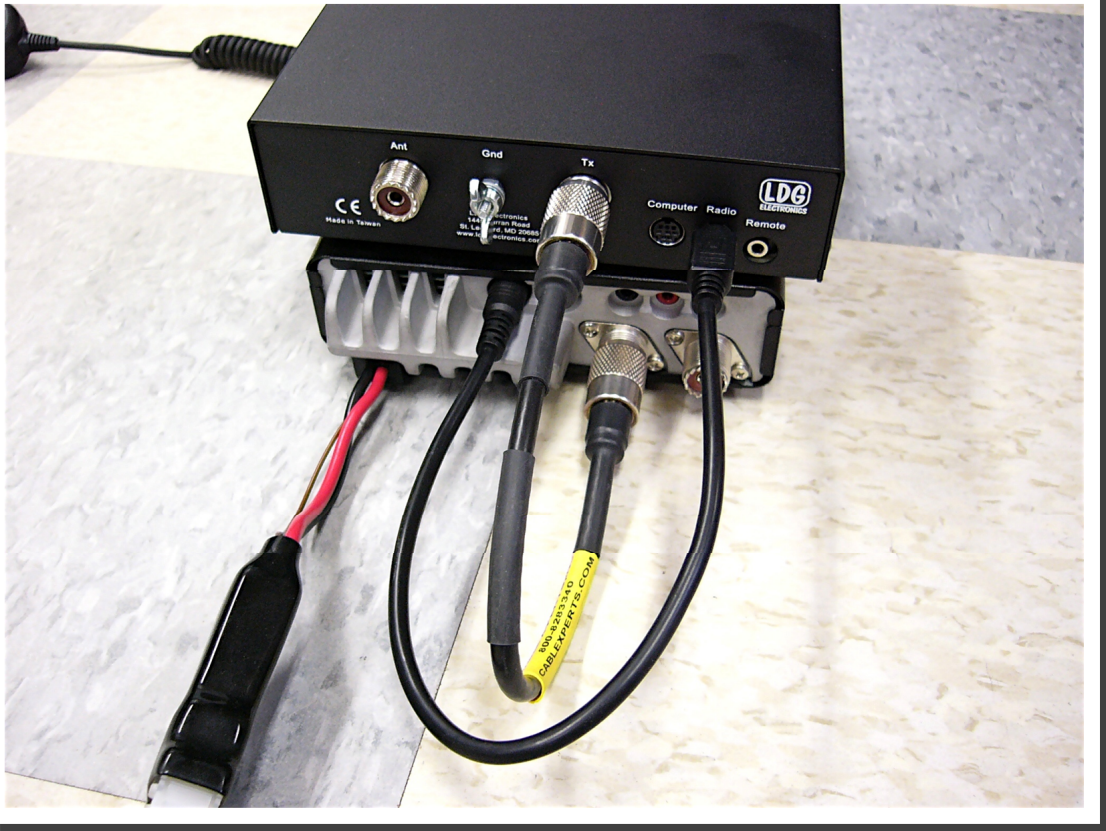
On the FT-100, press and hold the "**FUNC**" button on the front panel for one second, to enter the extended menu. Rotate the **SEL** knob until menu # 61, "TUNER/ATAS" is showing. Rotate the tuning dial until "off" is displayed. Now press and hold the "**FUNC**" button again to resume normal operation.



FT-857 and FT-897 Installation

Connect the HF/50 MHz antenna jack on the FT-857/897 to the **TX** jack on the back of the YT-100, using a 50 ohm coax cable rated 125 watts or greater.

Connect the supplied radio interface cable to the mini-DIN 8-pin jack on the rear of the YT-100, marked “**Radio**”. Connect the other end of this cable to the CAT/Linear jack on the rear of the FT-857/897.



On the FT-857/897, press and hold the **FUNC** button for one second to activate the extended menu system. Rotate the **SEL** knob until menu #019 “CAT RATE” is visible. Rotate the main tuning knob until “4800bps” is showing. Because the YT-100 is compatible with both the FT-857/897 and the FT-100 series of transceivers, the 4800 bps CAT rate must be used to accommodate the older FT-100.

Next, rotate the **SEL** knob one click clockwise, to select menu #020, “CAT/LIN/TUNER”. Rotate the main tuning knob until “CAT” is showing. Now press and hold **FUNC** again, to return to normal operation.

Finishing Up Installation

Connect a 50-ohm coax feedline to the jack marked **ANT** on the rear of the YT-100, and connect this to the antenna system.

If it is desired to operate the FT-100/857/897 via computer control, connect the Yaesu CT-62 CAT interface cable to the YT-100 port labeled “**Computer**”. The YT-100 will automatically feed through any CAT commands coming in over this port to the transceiver and vice versa. Note that any software used to control the transceiver will have to be set for 4,800 baud while connected through the YT-100.

Grounding the YT-100 tuner will enhance its performance and safety. LDG recommends that you connect your tuner to a suitable ground; a common ground rod connected to buried radials is preferred, but a single ground rod, a cold water pipe, or the screw that holds the cover on an AC outlet can provide a serviceable ground. LDG strongly recommends the use of a properly installed, high quality lightning arrestor on all antenna cables.

OPERATION

Power-up

The YT-100 is powered by the transceiver over the CAT interface cable. When the transceiver is turned on, the YT-100 also powers up. At this time, the YT-100 checks the connection to the transceiver. If this check fails, the **Status** LED will blink continuously. Possible causes for failure are an improperly seated CAT cable, a damaged CAT cable, or plugging the CAT cable into a radio other than an FT-100, FT-100D, FT-857, FT-857D, FT-897, or FT-897D.

As a further check, the YT-100 displays the type of transceiver it found by flashing the **Status** LED. The LED will blink once if it found an FT-100 or FT-100D, and will blink twice if it found an FT-857, FT-857D, FT-897, or FT-897D.

Basic Tuning Operation

The YT-100 is operated from the front panel **TUNE** button on the YT-100. Two types of tuning cycles are available; a memory tuning cycle and a full tuning cycle.

The **memory tuning cycle** attempts to tune quickly based on having previously tuned on the present frequency selection. If the tuner previously was successful in tuning on the currently selected frequency, the settings for that match will be loaded into the tuner relays, and checked to see that an acceptable SWR match is found.

A **full tuning cycle** “starts from scratch” and begins a fixed tuning sequence where the YT-100 rapidly tries varying combinations of inductance and capacitance values, and then zeroes-in on the best match possible. When the tuning cycle is complete, if an acceptable match was found, the inductance and capacitance settings are saved in a memory associated with the selected frequency, so that they may be recalled quickly in the future via a memory tuning cycle.

In this manner, the YT-100 “learns”; the longer you use it, the more closely it adapts itself to the bands and frequencies used. Most users will probably use memory tuning most of the time; it takes advantage of any saved tuning settings, but automatically defaults to a full tuning cycle if no stored data is available.

In both cases, at the end of the tuning cycle, the carrier is held for one second after tuning is complete, so that the final SWR may be read on the transceiver’s internal SWR meter or another inline SWR meter, and the front panel LED will indicate the status of the tuning cycle.

The tuner may also be placed in “bypass” mode where it is electrically removed from the antenna system.

Although the FT-100, FT-857, and FT-897 are all designed to transmit and receive on all HF bands plus 6 meters, 2 meters and 70 centimeters, the YT-100 is designed only to work on HF and 6 meters. In addition, the FT-100/857/897 transceivers all transmit UHF and VHF on a different antenna jack than the jack used for HF and 6 meters. For this reason, the YT-100's built-in software asks the transceiver for its operating frequency before beginning a tuning cycle, and will not allow a tuning cycle to begin if the radio is set above 60 MHz. This protects both the tuner and the radio!

Some Notes About Tuning

Note that when tuning with the YT-100, the level of the AM carrier transmitted by the radio is dependent upon the HF TX PO menu setting. If the YT-100 occasionally blinks out the "No RF" or "RF Lost" error codes during tuning, try increasing the HF TX PO menu setting before tuning. There is some variation from radio to radio, but, typically, settings above 15 will work without issue. However, most users will have no trouble even at 5 watts.

Also note that the FT-100 and FT-857/897 radios feature an SWR rollback circuit that can be fairly aggressive at times – even dropping out the RF carrier altogether for short periods of time! Because of this, you may occasionally hear the YT-100's relays momentarily stop clicking and start again while tuning. This is normal; it is just the result of the YT-100 waiting for the radio to begin transmitting again.

Toggle Bypass Mode:

To toggle between bypassed and active mode, press the front panel Tune button on the YT-100 momentarily. The Status LED will flash three times to indicate that the tuner is in bypass mode. Press the front panel Tune button momentarily again to recall the previous tuner settings. The Status LED will flash once to indicate that the tuner is no longer bypassed. This function may be useful if you wish to compare antenna performance with and without the benefit of the tuner's matching network.



Momentary Press



1 Blink = Active

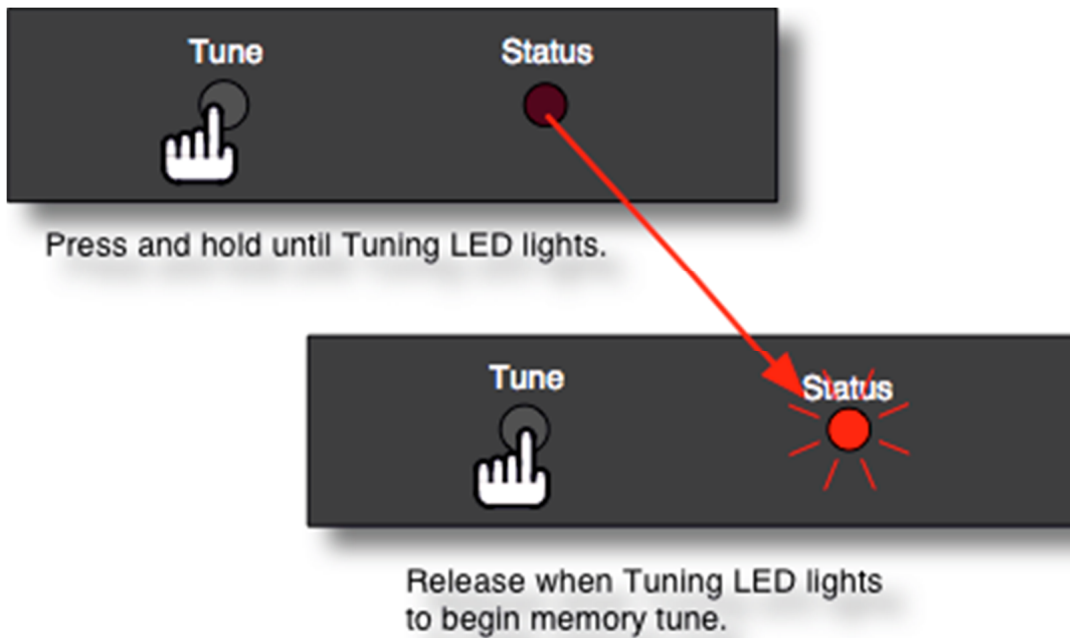


3 Blinks = Bypass

Initiate a Memory Tune Cycle:

To initiate a memory tuning cycle, press and hold the Tune button on the front of the YT-100 until the Status LED lights up. A memory tuning cycle will begin. The YT-100 will force the transceiver into AM mode, change the power level to one that is appropriate for tuning, and key the radio. When tuning is complete, the transceiver will return to the operating mode and power level previously set.

Be aware that the YT-100 tunes in **AM** mode. The microphone input is live during tuning, so anything you say may be heard while tuning!

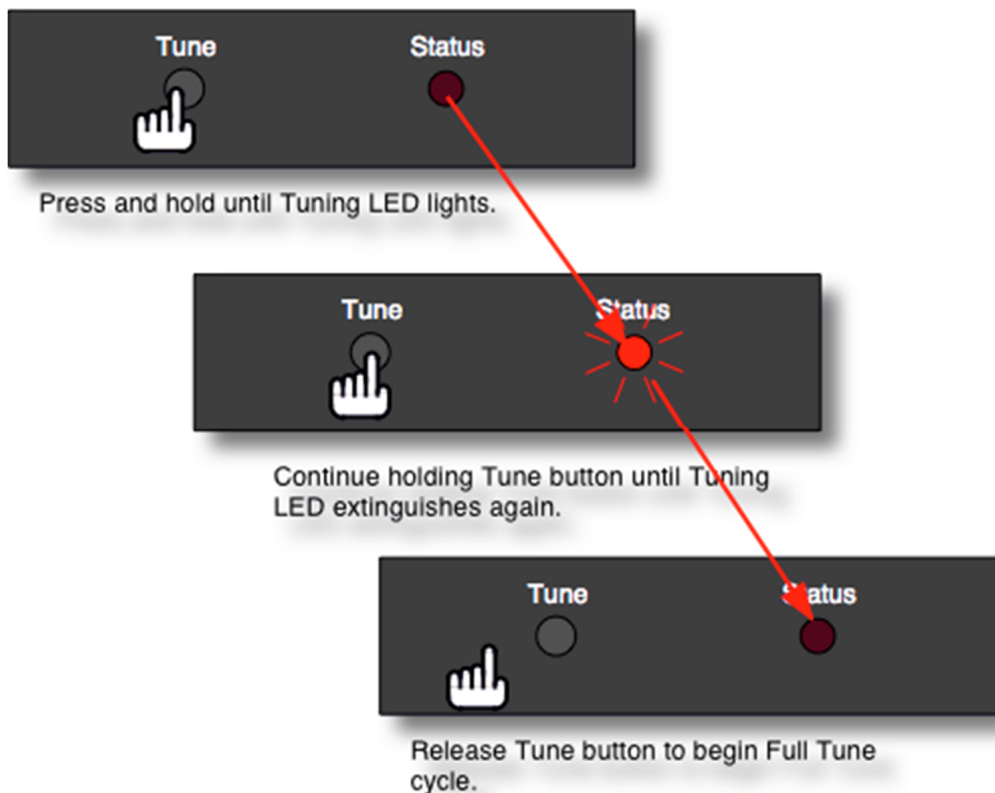


Force a Full Tune Cycle:

Sometimes, if you are transmitting on a previously tuned frequency, but something has slightly changed in your antenna system (maybe the antenna was re-oriented, for example), performing a memory recall tune will find a stored match that is acceptable, but is not as optimal as could be. In this case, forcing a full tune will cause the YT-100 to seek a better match than the match already stored in memory for this frequency.

To force a full tuning cycle, press and hold the **Tune** button on the front panel of the YT-100 until the **Status LED** lights up, and keep holding until the **Status LED** goes out again. Release the **Tune** button once the **Status LED** goes out. A full tuning cycle will begin. When tuning is complete, the transceiver will be restored to its previous operating mode and power level.

Be aware that the YT-100 tunes in **AM** mode. The microphone input is live during tuning, so anything you say may be heard while tuning!



Status LED

The **Status LED** is used to indicate both operating modes: tuning status, and error codes. The following table lists the LED status codes and their meaning.

LED Indication	Meaning
Status LED on.	Tuner is tuning.
Status LED goes out, then blinks once.	Tuner has completed a tuning cycle; a good SWR match was found.
Status LED goes out, then blinks twice.	Tuning cycle is complete; tuning match is between 1.5:1 and 3.0:1 SWR.
Status LED goes out, then blinks three times.	Tuning cycle is complete, tuning match is greater than 3.0:1 SWR.
Status LED blinks 4 times.	Tuning cycle failed, RF was lost in the middle of the tune.
Status LED blinks 5 times.	Tuning cycle failed, no RF was detected.

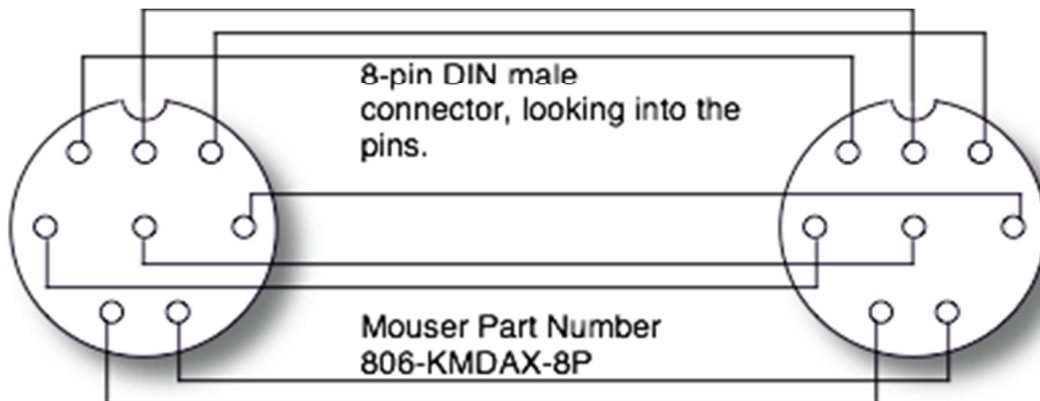
APPLICATION INFORMATION

Mobile Operation

The YT-100 is perfectly suited to mobile operation. It can be installed under the dashboard along with the transceiver, or mounted remotely. The only requirement is that the tuner remains dry.

The supplied radio interface cable is 14 inches long. If it is desired that the YT-100 is positioned farther from the transceiver than this cable length allows, a custom cable will need to be constructed. This can be accomplished in two ways: Cut the supplied cable and solder a jumper wire between all the connections, or purchase new connectors and cable to construct a custom-length interface cable from scratch.

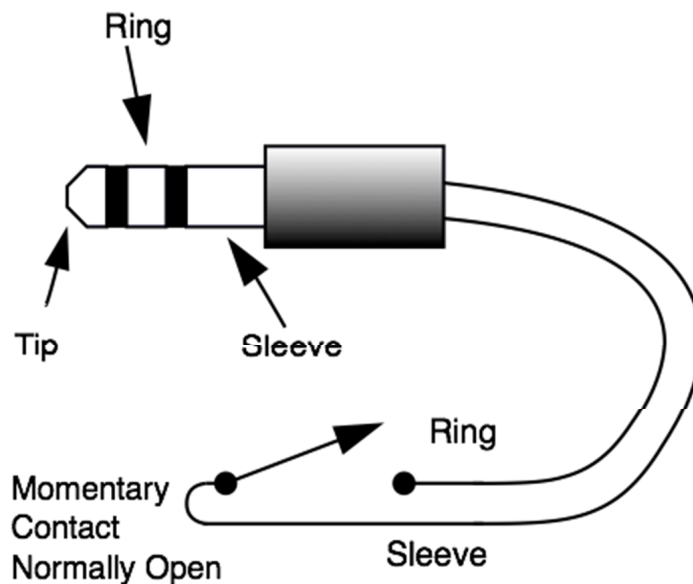
The 8-pin CAT interface connector is Kycon Connector part number KMDAX-8P, available from available from <http://www.mouser.com/> as Mouser part number 806-KMDAX-8P. Pinning for this cable is one-to-one, straight through; all eight signals are used.



Remote Operation

If it is desired that the YT-100 be located away from the operating position, remote operation is possible. A remote switch (not supplied) may be connected to the **REMOTE** jack on the rear of the YT-100. The **REMOTE** jack accepts a 1/8" (3.5mm) stereo plug. In order to use the remote jack, a remote control cable must be constructed according to diagram below. A momentary contact, normally open switch is wired such that when its contacts are closed, it shorts the ring and sleeve circuits of the remote jack together.

To operate the tuner remotely, press the momentary contact switch on the remote cable in the same manner as the front panel **Tune** switch on the YT-100. A short press will toggle bypass, a medium-length press will initiate a memory tune, and a long press will force a full tuning cycle.



The remote switch may be mounted in any convenient location.

MARS/CAP Coverage

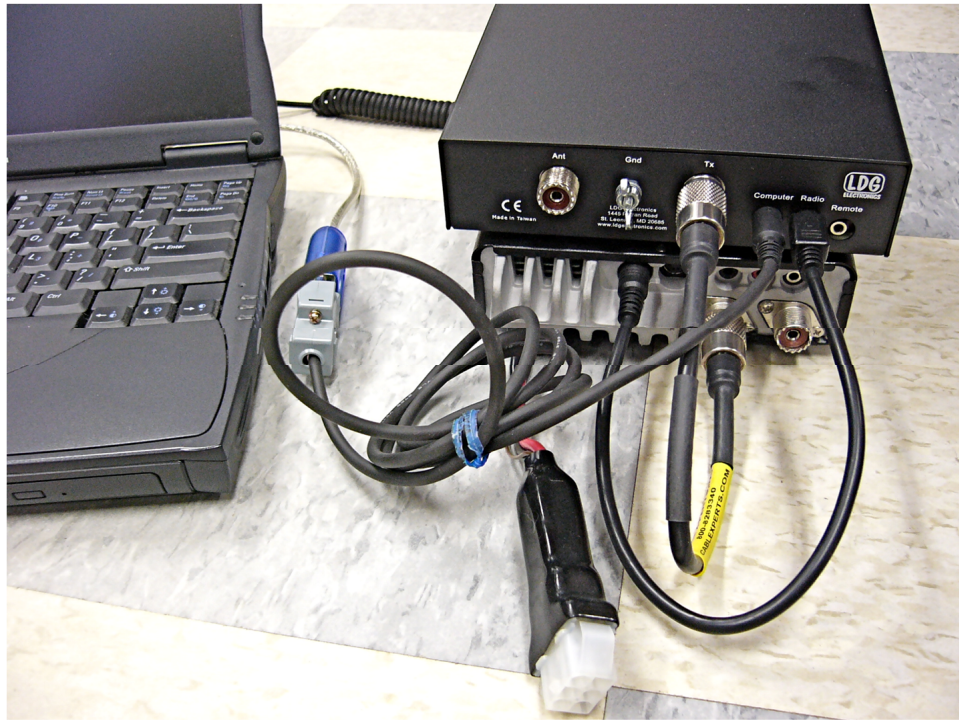
The YT-100 provides continuous tuning coverage over its specified range; not just in the ham bands. This makes it useful for MARS or CAP operation, or any other legal HF operation.

Operation with a PC / CAT

Although the YT-100 uses the transceiver's CAT port for tuning control, the YT-100 is designed to allow the user to continue to use the CAT interface with the transceiver for PC control, also.

If PC control of the radio is desired, simply hook the PC's CAT interface cable (such as Yaesu CT-62) to the **Computer** jack on the rear of the YT-100.

Any rig control software on the computer must be set to use the 4,800 baud rate, as this is the communication rate used by the YT-100 for controlling the radio.



The YT-100 monitors the **Computer** port for activity before beginning any tuning cycle. Only when the CAT line is idle for a period of time will the YT-100 take over control of the CAT line in order to

perform a tuning cycle. When the tuning cycle is complete, control of the CAT interface is returned to the PC.

This procedure is completely automatic, and is transparent to the user. Simply hook up a PC, and use the rig control software as normal. Press the **TUNE** button on the YT-100 when tuning is desired.

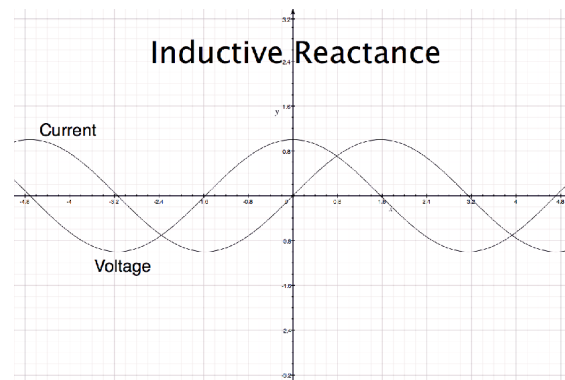
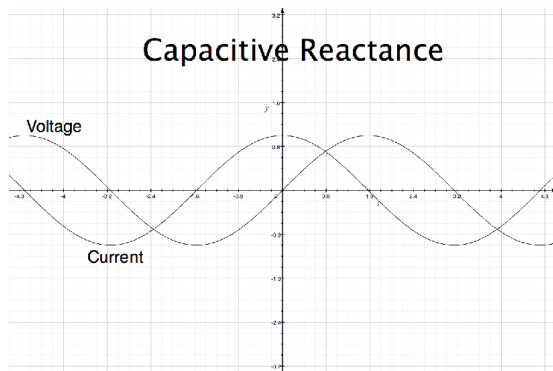
THEORY OF OPERATION

Some basic ideas about impedance

The theory underlying antennas and transmission lines is fairly complex, and in fact employs a mathematical notation called “complex numbers” that have “real” and “imaginary” parts. It is beyond the scope of this manual to present a tutorial on this subject¹, but a little background will help in understanding what the YT-100 is doing, and how it does it.

In simple DC circuits, the wire resists current flow, converting some of it into heat. The relationship between voltage, current, and resistance is described by the elegant and well-known “Ohm’s Law”, named for Georg Simon Ohm of Germany, who first discovered the principle in 1826. In RF circuits, an analogous but more complicated relationship exists.

RF circuits also resist the flow of electricity. However, the presence of capacitive and inductive elements causes the voltage to lead or lag the current, respectively. In RF circuits, this resistance to the flow of electricity is called “impedance”, and can include all three elements: resistive, capacitive, and inductive.



The output circuit of a transmitter consists of inductors and capacitors, usually in a series/parallel configuration called a “pi network”. The transmission line can be thought of as a long string of capacitors and inductors in series/parallel, and the antenna is a kind of resonant circuit. At any given RF frequency, each of these can exhibit resistance, and impedance in the form of capacitive or inductive “reactance”.

Transmitters, transmission lines, antennas, and impedance

The output circuit of a transmitter, the transmission line, and the antenna, all have a characteristic impedance. For reasons beyond the scope of this document, the standard impedance is nominally 50 ohms resistive, with zero capacitive and zero inductive components. When all three parts of the system

¹ For a very complete treatment of this subject, see any edition of the ARRL Handbook for Radio Communications (previously the Handbook For Radio Amateurs).

have the same impedance, the system is said to be “matched”, and maximum transfer of power from the transmitter to the antenna occurs. While the transmitter output circuit and transmission line are of fixed, carefully designed impedance, the antenna presents 50-ohm, non-reactive load only at its natural resonant frequencies. At other frequencies, it will exhibit capacitive or inductive reactance, causing it to have an impedance other than 50 ohms.

When the impedance of the antenna is different from that of the transmitter and transmission line, a “mismatch” is said to exist. In this case, some of the RF energy from the transmitter is reflected from the antenna back down the transmission line and into the transmitter. If this reflected energy is strong enough, it can damage the transmitter’s output circuits.

The ratio of transmitted to reflected energy is called the “standing wave ratio”, or SWR. An SWR of 1 (sometimes written 1:1) indicates a perfect match. As more energy is reflected, the SWR increases to 2, 3, or higher. As a general rule, modern solid state transmitters must operate with an SWR of 2 or less. Tube exciters are somewhat more tolerant of high SWR. If a 50 ohm antenna is resonant at the operating frequency, it will show an SWR close to 1. However, this is usually not the case; operators often need to transmit at frequencies other than resonance, resulting in a reactive antenna and a higher SWR.

where F = Forward power (watts), R = Reflected power (watts)

$$SWR = \frac{1 + \sqrt{\frac{R}{F}}}{1 - \sqrt{\frac{R}{F}}}$$

SWR is measured using a device called an “SWR bridge”, inserted in the transmission line between the transmitter and the antenna. This circuit measures forward and reflected power from which SWR may be calculated (some meters calculate SWR for you). More advanced units can measure forward and reflected power simultaneously, and show these values and SWR at the same time.

An antenna tuner is a device used to cancel out the effects of antenna reactance. Tuners add capacitance to cancel out inductive reactance in the antenna, and vice versa. Simple tuners use variable capacitors and inductors; the operator adjusts them by hand while observing reflected power on the SWR meter until a minimum SWR is reached. The LDG Electronics YT-100 automates this process.

No tuner will fix a bad antenna. If the antenna is far from resonance, the inefficiencies inherent in such operation are inescapable; it’s simple physics. Much of the transmitted power may be dissipated in the tuner as heat, never reaching the

REV	FWD Power (watts)								
	20	30	40	50	60	70	80	90	100
2	1.92	1.70	1.58	1.50	1.45	1.41	1.38	1.35	1.33
4	2.62	2.15	1.92	1.79	1.70	1.63	1.58	1.53	1.50
6	3.42	2.62	2.26	2.06	1.92	1.83	1.75	1.70	1.65
8	4.44	3.14	2.62	2.33	2.15	2.02	1.92	1.85	1.79
10	5.83	3.73	3.00	2.62	2.38	2.22	2.09	2.00	1.92
12	7.87	4.44	3.42	2.92	2.62	2.41	2.26	2.15	2.06
14	11.24	5.31	3.90	3.25	2.87	2.62	2.44	2.30	2.20
16	17.94	6.42	4.44	3.60	3.14	2.83	2.62	2.46	2.33
18	37.97	7.87	5.08	4.00	3.42	3.06	2.80	2.62	2.47
20		9.90	5.83	4.44	3.73	3.30	3.00	2.78	2.62
22		12.92	6.74	4.94	4.07	3.55	3.21	2.96	2.77
24		17.94	7.87	5.51	4.44	3.83	3.42	3.14	2.92
26		27.96	9.32	6.17	4.85	4.12	3.65	3.32	3.08
28		57.98	11.24	6.95	5.31	4.44	3.90	3.52	3.25
30			13.93	7.87	5.83	4.79	4.16	3.73	3.42
32			17.94	9.00	6.42	5.18	4.44	3.95	3.60
34			24.63	10.40	7.09	5.60	4.75	4.19	3.80
36			37.97	12.20	7.87	6.07	5.08	4.44	4.00
38			77.99	14.60	8.80	6.60	5.44	4.71	4.21
40				17.94	9.90	7.19	5.83	5.00	4.44
42				22.96	11.24	7.87	6.26	5.31	4.68
44				31.30	12.92	8.65	6.74	5.65	4.94
46				47.98	15.08	9.56	7.27	6.02	5.22
48				97.99	17.94	10.63	7.87	6.42	5.51
50					21.95	11.92	8.55	6.85	5.83

antenna at all. A tuner simply “fools” the transmitter into behaving as though the antenna were resonant, avoiding any damage that might otherwise be caused by high reflected power. For best performance, the antenna used should always be as close to resonance as is practical.

THE LDG YT-100

In 1995, LDG Electronics pioneered a new type of automatic antenna tuner. The LDG design uses banks of fixed capacitors and inductors, switched in and out of the circuit by relays under microprocessor control. An additional relay switches between high and low impedance ranges. A built-in SWR sensor provides feedback; the microprocessor searches the capacitor and inductor banks, seeking the lowest possible SWR. The tuner is a “Switched L” network, consisting of series inductors and parallel capacitors. LDG chose the L network for its minimum number of parts and its ability to tune unbalanced loads, such as coax-fed dipoles, verticals, Yagis, and, in fact, virtually any coax-fed antenna.

The series inductors are switched in and out of the circuit, and the parallel capacitors are switched to ground under microprocessor control. The high/low impedance relay switches the capacitor bank either to the transmitter side of the inductor bank, or to the antenna side. This allows the YT-100 to handle loads that are either greater than or less than 50 ohms. All relays are sized to carry 125 watts continuously.

The SWR sensor is a variation of the Bruene circuit. This SWR measuring technique is used in most dual-meter and direct-reading SWR meters. Slight modifications were made to the circuit to provide voltages instead of currents for the analog-to-digital converters that provide signals proportional to the forward and reflected power levels. The single-lead primary through the center of the sensor transformer provides RF current sampling. Diodes rectify the sample and provide a DC voltage proportional to RF power. These two voltages are read by the ADCs in the microprocessor, and are used to compute SWR in real time.

The relays are powered by the 12VDC input provided by CAT interface cable. The relays are a latching type, and so they consume no current when not actively switching.

Although the microprocessor’s oscillator runs at 8 MHz, which allows the main tuning routine to execute in only a few milliseconds, the relays require several milliseconds of settling time for every combination of inductors and capacitors. Thus, it may take several seconds before all relay combinations are exhausted, in the case of a difficult tune.

The tuning routine uses an algorithm to minimize the number of tuner adjustments. The routine first de-energizes the high/low impedance relay if necessary, and then individually steps through the inductors to find a coarse match. With the best inductor selected, the tuner then steps through the individual capacitors to find the best coarse match. If no match is found, the routine repeats the coarse tuning with the high/low impedance relay energized. The routine then fine tunes the inductors and capacitors. The program checks LC combinations to see if a 1.5:1 or lower SWR can be obtained and stops when it finds a good match.

The microprocessor runs a fine tune routine just after the tuner finds a match of 1.5:1 or less. This fine tune routine now tries to the SWR as low as possible (not just to 1.5); it takes about half a second to run.

A WORD ABOUT TUNING ETIQUETTE

Be sure to use a vacant frequency when tuning. With today's crowded ham bands, this is often difficult. However, causing interference to other hams should be avoided as much as possible. The YT-100's very short tuning cycle, as little as a fraction of a second, minimizes the impact of tuning transmissions.

CARE AND MAINTENANCE

The YT-100 tuner is essentially maintenance-free. Power limits in this manual should be strictly adhered to. The outer case may be cleaned as needed with a soft cloth slightly dampened with household cleaning solution. As with any modern electronic device, the YT-100 can be damaged by temperature extremes, water, impact, or static discharge. LDG strongly recommends the use of a good quality, properly installed lightning arrestor in the antenna lead.

TECHNICAL SUPPORT

The LDG Customer Support Center staff is ready to answer your product question by telephone and over the Internet. We know that you will enjoy your product even more knowing LDG is ready to answer your questions as the need arises.

Our website links you to the on-line Customer Support Center where you can send us a question, do your own research in the LDG Product Knowledge Books, and read through lists of frequently asked product questions. LDG regularly updates on-line information so the best on-line support information is available all day and every day.

The LDG website provides links to product manuals, just in case you lose this one! When you are thinking about the purchase of other LDG products our website also has complete product specifications and photographs you can use to help make your purchase decision. Don't forget the links to all of the quality LDG Dealers also ready to help you make that purchase decision.

TWO-YEAR TRANSFERRABLE WARRANTY

Your product is warranted against manufacturer defects in parts and labor for two full years from the date of purchase. This two-year warranty is also transferable. When you sell or give away your LDG product, give the new owner a copy of the original sales receipt and the two-year warranty goes with the new owner.

There is no need to complete a warranty card or to register an LDG product. Your product receipt establishes eligibility for warranty service so save that receipt. Send your receipt with the product whenever you send your product to LDG for repair. Products sent to LDG without a receipt are considered requests for out-of-warranty repair.

LDG does not warranty against product damage or abuse. This means that a product failure, as determined by LDG, to be caused by the customer or by other natural calamity (e.g. lightning) is not covered under the two-year warranty. Damage can be caused by failure to heed the product's published limitations and specifications or by not following good Amateur practice.

OUT OF WARRANTY SERVICE

Any time a product fails after the warranty, LDG wants to help you get it fixed. Send the product to us for repair. We will determine what needs to be done, and, based on your prior instruction, either contact you with an estimate or fix it and contact you with a request to pay any repair charges. Please contact LDG if you have any questions before you send us an out-of-warranty product for repair.

RETURNING YOUR PRODUCT FOR SERVICE

Returning a product to LDG is easy. We do not require a return merchandise authorization, and there is no need to contact LDG to return your product. Visit the **Customer Support Center** and download the LDG Product Repair Form. On the Repair Form tell the LDG technicians exactly what happened or didn't happen and why you believe the product needs servicing. The technician attempts to duplicate the problem(s) you had based on how well you describe it so take the time to be accurate and complete.

Ask your shipper for a tracking number or a delivery verification receipt. This way you know the product arrived safely at LDG. Be sure to give us your email address so our shipper can alert you online when your product is en-route back to you. Please be assured that our staff makes every effort to complete repairs ahead of our published wait time. Your patience is appreciated.

Repairs can take six to eight weeks, but are usually faster. The most recent information on returning products for service is found at the LDG Customer Support Center. Send your carefully packaged unit with the Repair Form to:

LDG Electronics, Inc.
Attn: Repair Department
1445 Parran Rd
St. Leonard, MD 20685

PRODUCT FEEDBACK

We encourage product feedback! Tell us what you really think of your LDG product. In a card, letter, or email (preferred) tell us how you used the product and how well it worked in your application. Send along a photo or even a schematic or drawing to illustrate your narrative. We like to share your comments with our staff, our dealers, and even other customers at the LDG website.

<http://www.ldgelectronics.com/>

